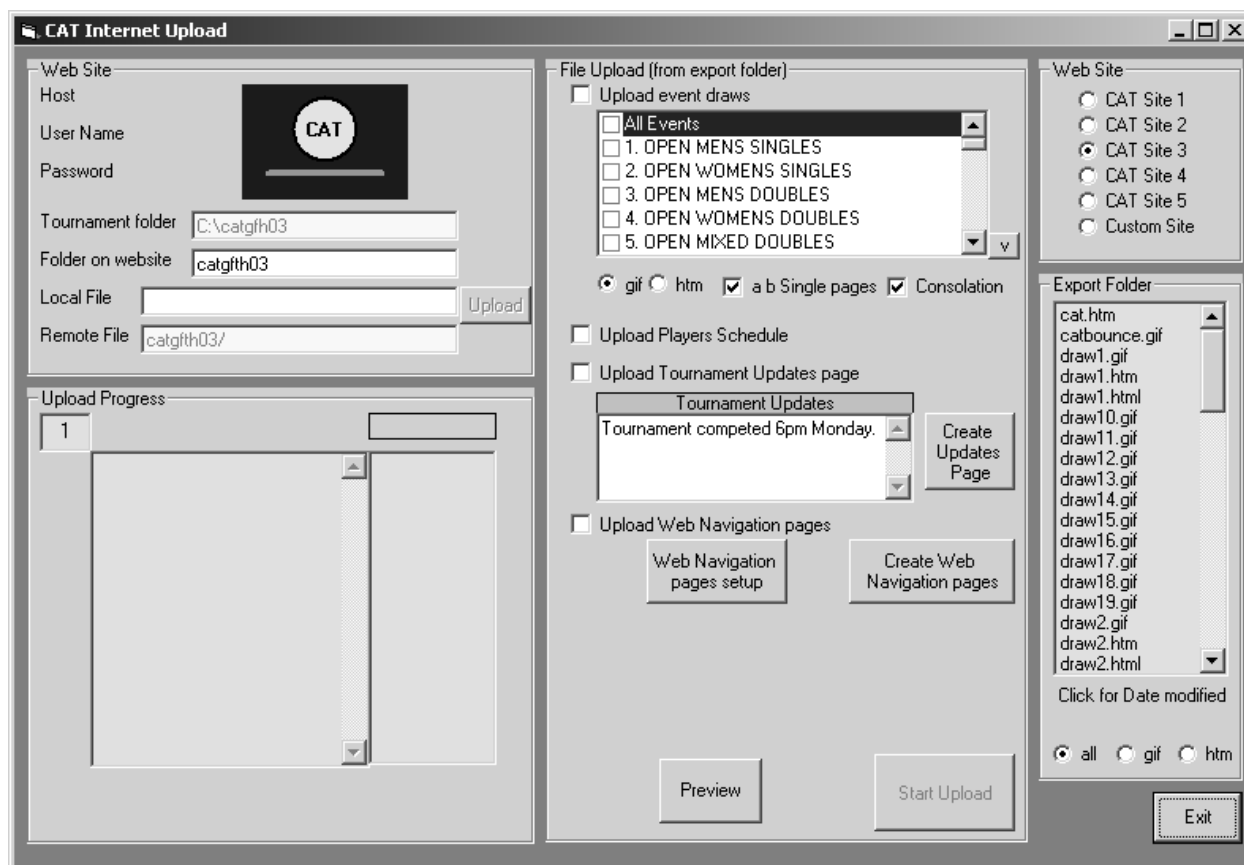


CAT for Windows Version 5

June 2003

This version offers, for the first time the ability to create and upload files to the internet all from within CAT. For this to occur the computer with CAT must have internet access. Also a number of changes have been made in the database structure to allow a conversion to Access 2000 format for the underlying database in Player Entries.

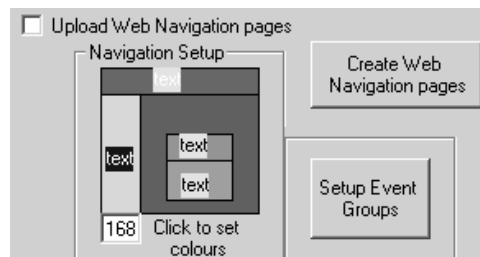
Utilities - Upload to Internet



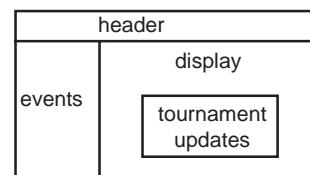
The above Internet Upload window displays allowing for the web pages to be created and then uploaded to either one of the CAT websites or a custom site where you can nominate your own site. The event draw and player schedule pages are not created in this section. The event draws are created in Print Event Draws using the Export Range selection. Players Schedules are created in Time Draw using the export selection in the Time Draw printing sections.

Web Navigation Page Setup

The pages for the web navigation of a CAT site consist of a header at the top, an event frame on the left and a display frame on the right. A Tournament Update section is located in the centre of the display frame. When events are clicked on the event list or the Player Schedule selected this is displayed in the display frame on the right.



The colours of the background and the text are set by clicking either the background or the text shown on the diagram. Once clicked a colour selection window appears where the colours can be selected. The width of the events column can be adjusted by changing the default 168 to a large or smaller value.



The header page is created from information entered in Tournament Setup, particularly the Tournament Details section.

Setup Event Groups -allows the entry of a heading for a group of events. The heading is printed in bold and then the heading text removed from the event name. eg if the heading text is set to Open and the first event is Event 1. Open Mens Singles then the event name is shortened to Mens Singles with the text Open removed. This saves space in the events frame and gives a neater less cluttered appearance.

Create Web Navigation Pages

Once the web navigation options have been set the Create Web Navigation Pages button should be clicked to create the pages. This will replace any previous pages that have been created in the export folder.

Note: All the Web navigation pages can be edited if required using an html editor eg Microsoft Frontpage if more elaborate pages are required rather than the basic layout created by CAT. If you have customised the web navigation pages then DO NOT use the Create Web Navigation pages selection after you have customised the pages otherwise these customised pages will be replaced.

Preview

This selection allows the pages created to be previewed in your default web browser before uploading to a website.

Tournament Updates Page | Create Updates Page

The text entered under Tournament updates is placed on the display page in the Tournament Update section when the Create Update page button is selected. Any text separated by a full stop and a space will be placed on a new line on the update page.

File Upload (from export folder)

Start Upload - activates once a selection below is made from the four upload sections below. When selected the upload progress is shown on the bottom left of the screen in the Upload Progress frame. Files when uploaded appear in the list on the right of this frame.

1. Upload event draws - Uploads event draws created in Print Event Draws - Export Range. The default format is GIF files although htm files can be selected. The files to be uploaded also appear in the Export folder list on the far right.

ab single pages - uploads multiple pages for event draws greater than 64 players - these must first be exported in Print Event Draws

consolation - uploads consolation draws and /or extended draws (events larger than event 46) if these are used in the tournament.

2. Upload Players Schedule - uploads a player schedule provided it has been exported in Time Draw Players Schedule export. The files uploaded are orderp.gif (the heading) and orderp.htm (The player schedule).

3. Upload Tournament Update page - uploads the latest tournament update page, notice.htm

4. Upload Web Navigation pages - uploads the web navigation pages cat.htm , header.htm, events.htm and notice.htm and orderplay.htm

Initially the web navigation pages should be uploaded first then draws, schedules and the tournament Updates page can be upload at any time.

Upload - This button next to the local file name on the left uploads just the one file selected in the Export folder list on the right of the screen. It is used if you only want to upload selected files one at a time rather than the File Upload - Start Upload which uploads files in bulk.

Web Site

There are 5 CAT Sites the default is set to CAT site 1 and the folder on this website set to test. This is a test website which can be used for testing purposes. Files uploaded to this site are accessed via www.test.92computing.com in your web browser. If you intend uploading to the CAT website 92 Computing will allocate you a CAT site number and a folder name which you can use for your tournament. Just send an email requesting space and space will be set aside.

If you already have a website then select Custom site. This displays three text boxes instead of the CAT logo;

Host - enter you ftp website host eg `ftp://yoursite.com`

Username: the username allocated for you to access the site.

Password: the password you need to access the site.

Files can then be uploaded with either the Upload button for individual files or the Start Upload button can upload draws, schedules , Tournament Update pages or the web navigation pages.

Export Folder

Shown on the right this list displays all the files in the export folder of the current CAT tournament folder. This list can be filtered by selecting the buttons at the bottom of all, gif or htm files.

When a file in the list is clicked the time and date the file was created as well as the file size in kilobytes appears in yellow at the bottom of the list.

Suggested procedure if using a CAT website.

1. Send an email to 92 Computing requesting a website folder indicating the name of the tournament and tournament dates. When you receive an email indicating the CAT site number and folder name set these up CAT Internet Upload.
2. Create the Web navigation pages and the Tournament Update pages - The update page could indicate the closing date for entries. This can be done some time before the tournament starts.
3. When the event draws are all created upload all the event draws.
4. When the schedule for the first days play is available upload the Player Schedule.
5. During the tournament when required upload updated draws with results and player schedules when available. Use the tournament update page to advise players of weather conditions or any other relevant special messages.
6. After the tournament is completed I will move the folder to the CAT tournament archives section on the 92computing website.

Consider using an online entry facility - Samples of these are on the CAT website- Email entry means a player fills in their details on the 92computing website and then you receive an email soon after the player clicks the submit button. The in a few simple clicks you can copy the information from the email and paste into the actual players entry in CAT Player Entries. Just email 92 Computing requesting such an entry form be placed on the website.

Installation of CAT for Windows Version 5

Note: This upgrade is for existing registered users of CAT for Windows Version 4.

- A. [Download CAT for Windows v5](#) (installcatwin2003v5.exe 848 Kb)
- B. [Download Version 5 support file update](#) (catv5update.exe 1.5Mb)
- C. [Download Player Entries database update](#) (installcatpi.exe 20Kb)
- D. Upgrade Microsoft Jet 4.0 database engine

Click the appropriate download for your operating system below;

[Windows 95/98/NT](#) [Windows ME](#) [Windows 2000](#) [Windows XP](#)

E [Download Version 5 documentation](#)

Installation Instructions:

Step 1

Download **A** CAT for Windows v5.00 installcatwin2003v5.exe (approx 850Kb)

Obtain the unlocking password from 92 Computing via email or phone.

Make sure CAT is not currently running on your computer. Exit the program if it is.

Using My Computer or Explorer locate the file downloaded above and double click to unzip into the folder c:\Program Files\cat , the default installation folder of CAT for Windows. After entering the required password this process will unzip the update and replace your existing version of CAT for Windows with the latest version. Close the unzip window and start CAT to display the latest version.

Step 2

In CAT Utilities select Internet Upload and see if there are any messages regarding a required update. If no messages appear then exit and proceed to Step 3.

If an update message appears exit CAT and download Download **B** Version 5 support file update , catv5update.exe. Once this file is downloaded, Double click the catv5update.exe to extract into a folder c:\catv5update or a folder of your choice. Locate the setup file created in this folder and double click install this update. Click the install button and extra Microsoft support files will be installed. After these are installed start CAT and test that the internet Upload button in Utilities does not display an error message.

Step 3

Download **C** Player Entries database update. Make sure CAT is not running then double click to install this file into your current tournament folder. You may have to change the default c:\cat [c:\cat](#) to your current folder. Once installed start CAT and select Utilities and select a Player Entries rebuild at the top of the screen. Then exit Utilities and start Player Entries. If there are no error messages go to Step 4

If an error message appears in Player Entries exit CAT and download **D** Microsoft Jet Database update for your operating system. Install as per the instructions from Microsoft then try CAT Player Entries again. The error message will not appear.

Step 4

Installation completed - download **E** CAT version 5 documentation

CAT Version 5.10

July 2003

Print Event Draws

Draw Export - A new tab has been added which groups all the exporting features in a more accessible area. Extra exports have been added to the existing gif, bmp and html exports. These are jpg, png and tif as well as two options for text exports, one exporting information across the draw from left to right and the other exporting down the draw from top to bottom then across from left to right.

Extra Reports

Information Sheets - CAT will now save the information sheet message and return address correctly if a series of lines are required for either of these fields. In previous versions if you entered a series of messages on different lines only the first was retained if you exited Extra Reports then came back later to this report. This would have required a re-entry of the missing lines. This is now fixed.

Selection of Time Draws - This is now an ordered selection - i.e. the first time draw selected is printed before the second selected and so on. This fixes a potential problem in previous versions where if you wanted Time Draw 10 to be listed before Time Draw 1 on the information sheets or the Multi day Player Schedule List it was not possible. The order the Time Draws are selected now determines how they print.

Player Schedule List - This list has been revamped and allows for an extra notes section which will appear at the top of the list of player matches, a selection to allow for adjusted or standard order of player names, and a no match phrase which is customisable from the standard 'no matches scheduled' if required. Also the format of the information presented shows the players name in bold as show below;

JOHN SMITH

Matches for Friday 2nd June

9.00 in Event 2 OPEN MENS SINGLES at Tennis Centre

11.00 in Event 3 OPEN MENS DOUBLES at Tennis Centre

Matches for Saturday 3rd June

10.00 in Event 2 OPEN MENS SINGLES at Tennis Centre (? Possible match)

Export Player Schedule List - There is a new button which exports the Player Schedule list as both a text file reports.txt and also an html file orderp.htm. This orderp.htm file is the same file created in Time Draw by the single day schedule export and will correspond to the orderp.htm file uploaded in Utilities - Upload to Internet feature introduced in Version 5.00.

In addition in Time Draw printing a new button has been added Multi- Day Export - This allows a direct exit from Time Draw to the Multi Day Player Schedule section of Extra reports.

These features now allow multi day schedules once created in Time Draw to be easily exported and printed if required.

Time Draw

Time Draw printing - The Player Schedule List section has been moved to the lower left of the screen and the exporting section, including the Multi Day export have moved next to these selections. The extra notes text box which prints message to players at the top of the player schedule lsits now retains multi line entry.

Player Entries

If players are added after entries have closed a prompt appears which directs you to adjust the player alphabetical order for Time Draw printing. If the prompt is accepted you are taken to Utilities and directed to press the Create Adjusted Alphabetical Player Order button. This adjusts the printed order for Time Draw so that late entries appear in the lists in the correct alphabetical order. This adjustment does not affect the order of players names in Player Entries as this order stays as is.

Note: No prompt is provided if you edit a players surname after entries have closed - If a players surname was changed from JONES to SMITH-JONES then the user would have to remember to go to Utilities and update the alphabetical adjusted order after making the change. If this is not done then Smith - Jones will appear in the original position in the J's.